



The 1st International Seminar on Language, Literature and Education (ISLLE 2017)

Jakarta, Indonesia

25-26 July 2017

ISSN 2518-668X

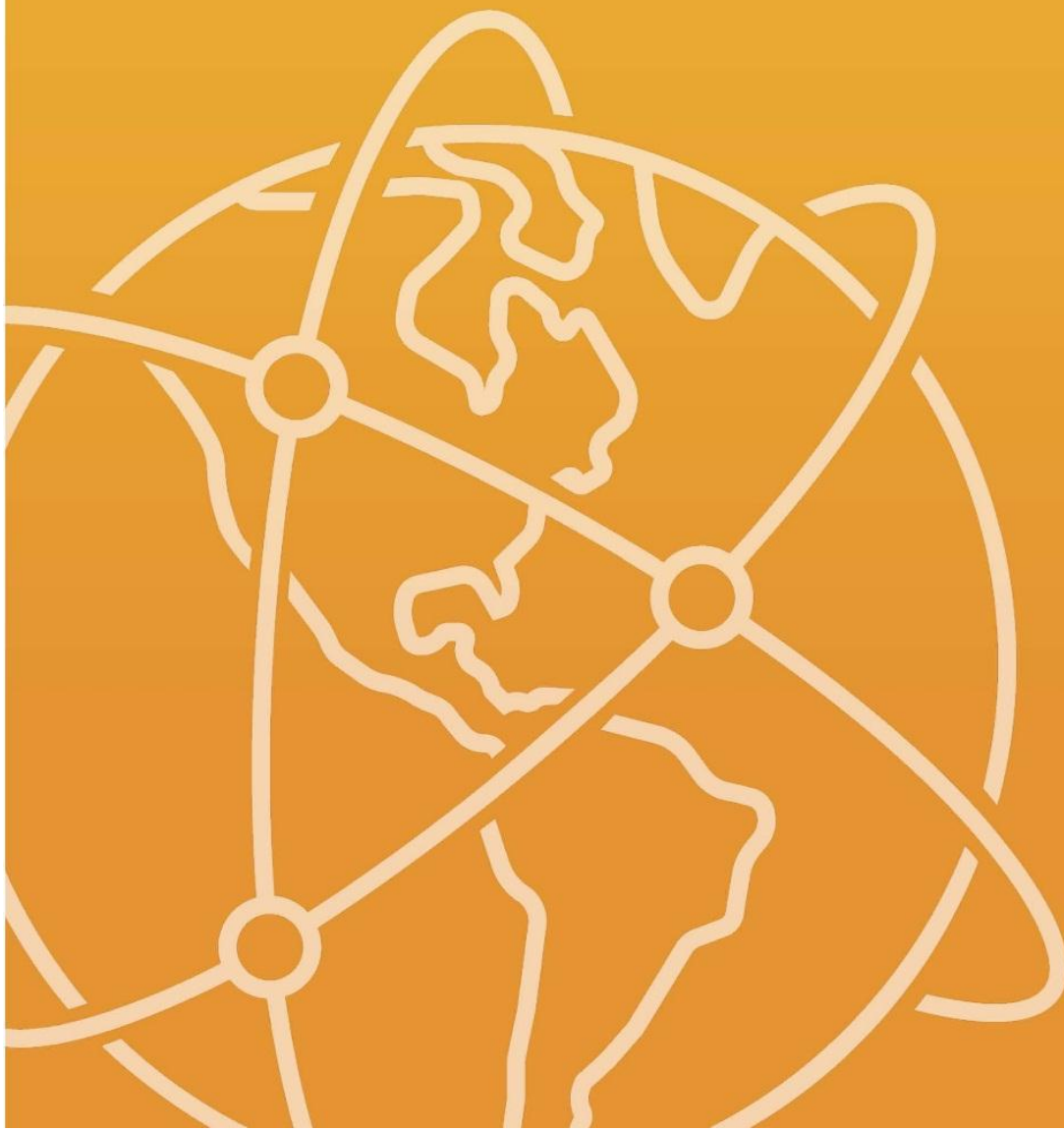


TABLE OF CONTENTS

[The 1st International Seminar on Language, Literature and Education \(ISLLE 2017\)](#) | pages 1–6

[The Role of Language Editors in Improving the Quality of Academic Books Published By University Presses](#)

B Setiawan, K Saddhono, Purwadi

[DOWNLOAD FULLTEXT](#)

[The 1st International Seminar on Language, Literature and Education \(ISLLE 2017\)](#) | pages 7–18

[Application of GIST Methods in the Teaching of Reading Comprehension to the Intermediate Level of Indonesian Language for Non-native Speakers](#)

D Hadiano

[DOWNLOAD FULLTEXT](#)

[The 1st International Seminar on Language, Literature and Education \(ISLLE 2017\)](#) | pages 19–27

[Reinterpretation and Reconstruction of the Folktale Jaka Tarub into Akhudiat's Play Jaka Tarub: A New Historicist Reading](#)

L M Rahayu, A Priyatna, R Budhyono

[DOWNLOAD FULLTEXT](#)

[The 1st International Seminar on Language, Literature and Education \(ISLLE 2017\)](#) | pages 28–37

[Students' Expectation Regarding the Presentation Learning System](#)

I Lisnawati

[DOWNLOAD FULLTEXT](#)

[The 1st International Seminar on Language, Literature and Education \(ISLLE 2017\)](#) | pages 38–42

[Performance Situation Analysis on Jaipong Dance as an Oral Tradition in Desa Tanjungmekar, Karawang](#)

E Nurhasanah

[DOWNLOAD FULLTEXT](#)

[The 1st International Seminar on Language, Literature and Education \(ISLLE 2017\)](#) | pages 43–50

Validity Test and Reliability of Indonesian Language Multiple Choice in Final Term Examination

R Setyawaty, T B Sulistyorini, Margono , L E Rahmawati

[DOWNLOAD FULLTEXT](#)

[The 1st International Seminar on Language, Literature and Education \(ISLLE 2017\)](#) | pages 51–57

Indonesian Language Transfer of Students of English as a Second Language (ESL)

C Sidupa

[DOWNLOAD FULLTEXT](#)

[The 1st International Seminar on Language, Literature and Education \(ISLLE 2017\)](#) | pages 58–63

Ecological Concept of Wayang Stories and the Relation with Natural Conservation in Javanese Society

D Sulaksono, K Saddhono

[DOWNLOAD FULLTEXT](#)

[The 1st International Seminar on Language, Literature and Education \(ISLLE 2017\)](#) | pages 64–73

Exploring English as a Foreign Language (EFL). Students' Anxiety Toward a Student-centered Learning Approach: Levels, Factors, and Strategies to Cope with Them

A Budiman, Ngadiso , Suparno

[DOWNLOAD FULLTEXT](#)

[The 1st International Seminar on Language, Literature and Education \(ISLLE 2017\)](#) | pages 74–84

Learning Through Literature: Whitman's Concept of Democracy in Trump's America

L Manggong

[DOWNLOAD FULLTEXT](#)

[The 1st International Seminar on Language, Literature and Education \(ISLLE 2017\)](#) | pages 85–91

[Street Children's Information Literacy: A Case Study at a Foundation in Bandung](#)

R K Anwar, A Rusmana

[DOWNLOAD FULLTEXT](#)

[The 1st International Seminar on Language, Literature and Education \(ISLLE 2017\)](#) | pages 92–98

[Integrating Intralingual and Extralingual Cotext in Educational Pragmatic Learning](#)

Pranowo

[DOWNLOAD FULLTEXT](#)

[The 1st International Seminar on Language, Literature and Education \(ISLLE 2017\)](#) | pages 99–107

[Douglas Walton's Argumentation Models in the Vehicle of the Indonesian Language internationalization](#)

Y Setyaningsih, R K Rahardi

[DOWNLOAD FULLTEXT](#)

[The 1st International Seminar on Language, Literature and Education \(ISLLE 2017\)](#) | pages 108–114

[Model of Problem-based Learning Module on Indonesian Language Affixation](#)

A Rofii

[DOWNLOAD FULLTEXT](#)

[The 1st International Seminar on Language, Literature and Education \(ISLLE 2017\)](#) | pages 115–125

[Strengthening the Local Culture of the Oral Tradition of Berahoi to Develop Creative Industry](#)

K Ansari, S H Umri

[DOWNLOAD FULLTEXT](#)

[The 1st International Seminar on Language, Literature and Education \(ISLLE 2017\)](#) | pages 126–134

Cultural Elements in the Indonesian Textbooks as a Foreign Language (BIPA) in Indonesia

K Saddhono

[DOWNLOAD FULLTEXT](#)

[The 1st International Seminar on Language, Literature and Education \(ISLLE 2017\)](#) | pages 135–146

Cirebon Puppets Through the Sendratari Show on the Role, Category, Meaning, and Character Values of Pantura Region III West Java's People and Application of the Results for Arts Literature Learning in Senior High School

Taiman

[DOWNLOAD FULLTEXT](#)

[The 1st International Seminar on Language, Literature and Education \(ISLLE 2017\)](#) | pages 147–153

The Needs of Character Education Based on Fairy-tale Textbook Development for Junior High Students in Semarang Regency

A Azizah, J Nurkamto, S Suwandi, M Rohmadi

[DOWNLOAD FULLTEXT](#)

[The 1st International Seminar on Language, Literature and Education \(ISLLE 2017\)](#) | pages 154–161

The Preservation of Balinese Oral Literature in Globalization

I N Suaka

[DOWNLOAD FULLTEXT](#)

[The 1st International Seminar on Language, Literature and Education \(ISLLE 2017\)](#) | pages 162–170

Analysis of Students' Learning Needs: Learning Design of Module for Japanese Sentences' Final Particles

H Wahyuningtias, A Artadi, H Djaya

[DOWNLOAD FULLTEXT](#)

[The 1st International Seminar on Language, Literature and Education \(ISLLE 2017\)](#) | pages 171–176

[Contextual Approach for Expository Essay: A Study of Writing Achievement and Quality](#)

S Indrawati, A Ayob

[DOWNLOAD FULLTEXT](#)

[The 1st International Seminar on Language, Literature and Education \(ISLLE 2017\)](#) | pages 177–185

[Writing Dulmuluk Script in Siti Zubaidah Version: Defense Efforts of Dulmuluk in the Global Era](#)

L Ratnawati, A Idi, Nurhayati

[DOWNLOAD FULLTEXT](#)

[The 1st International Seminar on Language, Literature and Education \(ISLLE 2017\)](#) | pages 186–194

[The Effectiveness of Module and Compact Disc Poem Teaching Based on Local Wisdom](#)

Z Alwi, A Idi, Nurhayati

[DOWNLOAD FULLTEXT](#)

[The 1st International Seminar on Language, Literature and Education \(ISLLE 2017\)](#) | pages 195–201

[The Influence of Peer Editing Technique on Students' Essay Writing Skill](#)

Subadiyono

[DOWNLOAD FULLTEXT](#)

[The 1st International Seminar on Language, Literature and Education \(ISLLE 2017\)](#) | pages 202–211

[Developing Module 'Experts in Dulmuluk Performance' in University Students](#)

Nurhayati, M E Purnomo, Subadiyono, S Meidarini

[DOWNLOAD FULLTEXT](#)

[The 1st International Seminar on Language, Literature and Education \(ISLLE 2017\)](#) | pages 212–217

[Deixis of Narration: Research in the Student Education in Indonesian Language and Literature, Faculty of Language and Literature, State University of Makassar University](#)

Azis , Juanda

[DOWNLOAD FULLTEXT](#)

[The 1st International Seminar on Language, Literature and Education \(ISLLE 2017\)](#) | pages 218–225

[Developing a Prophetic Values-based Mind Mapping Learning Model in Writing Expositions](#)

N Maelasari

[DOWNLOAD FULLTEXT](#)

[The 1st International Seminar on Language, Literature and Education \(ISLLE 2017\)](#) | pages 226–235

[Analysis of Politeness Speech Acts Thanking in Japanese By Indonesian Students: Study Case By Students Majoring in Japanese Literature at Bung Hatta University](#)

D Kartika

[DOWNLOAD FULLTEXT](#)

[The 1st International Seminar on Language, Literature and Education \(ISLLE 2017\)](#) | pages 236–243

[Hybrid E-learning Media Application to Increase Local Cultural Understanding in Indonesian Learning for Foreign Studen](#)

Andayani

[DOWNLOAD FULLTEXT](#)

[The 1st International Seminar on Language, Literature and Education \(ISLLE 2017\)](#) | pages 244–253

[The Representation of Character Education Values in the Novel Dasamuka By Junaedi Setiyono](#)

F Hidayati, S Suwandi, St Y Slamet

[DOWNLOAD FULLTEXT](#)

[The 1st International Seminar on Language, Literature and Education \(ISLLE 2017\)](#) | pages 254–260

[The Importance of Needs Assessment for the Implementation of E-Learning in a Language Program](#)

S T Nugraha, S Suwandi, J Nurkamto, K Saddhono

[DOWNLOAD FULLTEXT](#)

[The 1st International Seminar on Language, Literature and Education \(ISLLE 2017\)](#) | pages 261–267

[The Effectiveness of Ecological Intelligence-Based Indonesian Language Textbooks on the Environmentally Friendly Behaviors of State Junior High School Students in Surakarta](#)

S Suwandi, A Yunus, L E Rahmawati

[DOWNLOAD FULLTEXT](#)

[The 1st International Seminar on Language, Literature and Education \(ISLLE 2017\)](#) | pages 268–274

[Development of Portable E-comic-Based Indonesian Language Teaching Materials for 7th Grade Students](#)

T Nurhayatin, Marlia , D F Fauziyyah

[DOWNLOAD FULLTEXT](#)

[The 1st International Seminar on Language, Literature and Education \(ISLLE 2017\)](#) | pages 275–283

[Proposed Task-Based Materials for Writing Classes: A Case at University](#)

H Sundari, R H Febriyanti, G Saragih

[DOWNLOAD FULLTEXT](#)

[The 1st International Seminar on Language, Literature and Education \(ISLLE 2017\)](#) | pages 284–294

[A Structural Move Analysis of Abstracts in Undergraduate Theses: A Case Study at Universitas Kristen Indonesia](#)

H Male

[DOWNLOAD FULLTEXT](#)

[The 1st International Seminar on Language, Literature and Education \(ISLLE 2017\)](#) | pages 295–301

[The Development of A Website-Based Literature Module On Bahasa And Sastra Indonesia Subject XI Grade Senior High School](#)

Y Lidyawati

[DOWNLOAD FULLTEXT](#)

[The 1st International Seminar on Language, Literature and Education \(ISLLE 2017\)](#) | pages 302–317

[News of Islamic Blasphemy onthe Websites of Kompas and Republika: A Critical Discourse Analysis](#)

Nuryadi , D Suganda, N Sunarni, N Darmayanti

[DOWNLOAD FULLTEXT](#)

[The 1st International Seminar on Language, Literature and Education \(ISLLE 2017\)](#) | pages 318–329

[The Effect of Constructive Imaginative Mind Maps, Vee Maps, and Concept Maps on Students' Attitude and Ability to Write Short Stories at Senior High School \(SMAN\) 13 Palembang](#)

Ernalida , A Ayob

[DOWNLOAD FULLTEXT](#)

[The 1st International Seminar on Language, Literature and Education \(ISLLE 2017\)](#) | pages 330–336

[The Need to Develop a Fast-track-based Bahasa Indonesia Learning Model in Higher Education Institutions](#)

T Hariadi, S Suwandi, St Y Slamet, Sumarwati

[DOWNLOAD FULLTEXT](#)

[The 1st International Seminar on Language, Literature and Education \(ISLLE 2017\)](#) | pages 337–345

[The Implementation of a Life Skills-Oriented Participatory Learning Strategy to Improve Reading and Writing Skills](#)

L S Nurwahidah

[DOWNLOAD FULLTEXT](#)

[The 1st International Seminar on Language, Literature and Education \(ISLLE 2017\)](#) | pages 346–356

[Application of Clustering Techniques Based on the Balance of Brain Functions in Learning Writing Narration in Ponorogo Elementary School](#)

R Wardiani, S Suwandi, Andayani , Budiyono

[DOWNLOAD FULLTEXT](#)

[The 1st International Seminar on Language, Literature and Education \(ISLLE 2017\)](#) | pages 357–363

[Brebes Sundanese Language in the Realm of Social Intercourse as a Territorial Identity](#)

S Junawaroh, C Sobarna, Wahya , S Riyanto

[DOWNLOAD FULLTEXT](#)

[The 1st International Seminar on Language, Literature and Education \(ISLLE 2017\)](#) | pages 364–376

[Communication Culture in Political Debate in Indonesia](#)

M Jazeri

[DOWNLOAD FULLTEXT](#)

[The 1st International Seminar on Language, Literature and Education \(ISLLE 2017\)](#) | pages 377–386

[Developing Indonesian Instructional Materials for Lower-Grade Students of Elementary Schools Throughout Bali: An Ethnopedagogic Study](#)

I W Rasna

[DOWNLOAD FULLTEXT](#)

[The 1st International Seminar on Language, Literature and Education \(ISLLE 2017\)](#) | pages 387–394

[The Influence of Traditional Song Diction in the Musical Accompaniment for Hadroh Dance on the Cultural Identity of Muaro Jambi Society](#)

Y Dewi

[DOWNLOAD FULLTEXT](#)

[The 1st International Seminar on Language, Literature and Education \(ISLLE 2017\)](#) | pages 395–410

Teaching Writing in Indonesian Language Classes with a Genre-Based Approach (GBA): Between Hope and Reality (An Analysis of Lesson Plans in the Curriculum 2013 Classroom)

M Botifar

[DOWNLOAD FULLTEXT](#)

[The 1st International Seminar on Language, Literature and Education \(ISLLE 2017\)](#) | pages 411–418

Banter Politeness from Cultural Perspective (Analysis of Palembang Malay Language)

Houtman

[DOWNLOAD FULLTEXT](#)

[The 1st International Seminar on Language, Literature and Education \(ISLLE 2017\)](#) | pages 419–426

Coping with Learning Disability in a Dyslexic Child in Terms of an Instructional Model

S Fitriani, S Felina

[DOWNLOAD FULLTEXT](#)

[The 1st International Seminar on Language, Literature and Education \(ISLLE 2017\)](#) | pages 427–434

Human Integration of a Character-based Curriculum and Humanistic Values As Basic Initiation of a Human Rights-friendly School

S Wahjusaputri

[DOWNLOAD FULLTEXT](#)

[The 1st International Seminar on Language, Literature and Education \(ISLLE 2017\)](#) | pages 435–445

Rhetorical Devices in the Presidential Speeches of the President of the Republic of Indonesia in the Reformation Era

Noermanzah

[DOWNLOAD FULLTEXT](#)

[The 1st International Seminar on Language, Literature and Education \(ISLLE 2017\)](#) | pages 446–452

Woman Language in a Political Campaign for the Region General Election: Khofifah Indar Parawansa

S Suciati, Rustono , T Supriyanto, M Mulyani

[DOWNLOAD FULLTEXT](#)

[The 1st International Seminar on Language, Literature and Education \(ISLLE 2017\)](#) | pages 453–460

Students' Ability in Writing Narrative Texts in Bahasa Indonesia

A Nurjamin

[DOWNLOAD FULLTEXT](#)

[The 1st International Seminar on Language, Literature and Education \(ISLLE 2017\)](#) | pages 461–466

Symbolic Investment Strategy of Ayu Utami in Literature Field Cultural Production by Pierre Bourdieu Perspective

A N Affandy, H Supratno

[DOWNLOAD FULLTEXT](#)

[The 1st International Seminar on Language, Literature and Education \(ISLLE 2017\)](#) | pages 467–473

The Strategy of Ideology Tracking on the Novel Bumi Manusia through a Mental Model

Rahutami

[DOWNLOAD FULLTEXT](#)

[The 1st International Seminar on Language, Literature and Education \(ISLLE 2017\)](#) | pages 474–479

The Attitudes of Junior High School Students Towards Indonesia Language

R Suhita, B Setiawan, H J Waluyo

[DOWNLOAD FULLTEXT](#)

[The 1st International Seminar on Language, Literature and Education \(ISLLE 2017\)](#) | pages 480–503

Coercive Conduct and Rationalization of Religion Lead to Dilution of Faith in Bless Me, Ultima by Rudolfo A. Anaya

A Minderop

[DOWNLOAD FULLTEXT](#)

[The 1st International Seminar on Language, Literature and Education \(ISLLE 2017\)](#) | pages 504–509

Language Attitude and Motivation Toward Learning Indonesian of Third Grade Students of Junior and Senior High Schools at Triton Tutoring Agency Denpasar

I M Utama, P A M Pinatih, I N Suandi

[DOWNLOAD FULLTEXT](#)

[The 1st International Seminar on Language, Literature and Education \(ISLLE 2017\)](#) | pages 510–521

Intercultural Assessment Through Peircean Signs of Scholars' Digital Divide

V Y Harmayanthi

[DOWNLOAD FULLTEXT](#)

[The 1st International Seminar on Language, Literature and Education \(ISLLE 2017\)](#) | pages 522–530

Behavioristic Theory and Its Application in the Learning of Speech

A Anindyarini, F Rokhman, M Mulyani, Andayani

[DOWNLOAD FULLTEXT](#)

[The 1st International Seminar on Language, Literature and Education \(ISLLE 2017\)](#) | pages 531–537

Strategy of Language Politeness in Effort to Build character

E Sulastriana

[DOWNLOAD FULLTEXT](#)

[The 1st International Seminar on Language, Literature and Education \(ISLLE 2017\)](#) | pages 538–545

E-literary Texts: Reading Materials for School Literacy Movement

D B P Setiyadi

[DOWNLOAD FULLTEXT](#)

[The 1st International Seminar on Language, Literature and Education \(ISLLE 2017\)](#) | pages 546–553

Implementation of Teaching Materials Based on Indonesian Culture in BIPA Learning As One Way to Lift Indonesian Culture in the World

I Cahyani, D Hadianto

[DOWNLOAD FULLTEXT](#)

[The 1st International Seminar on Language, Literature and Education \(ISLLE 2017\)](#) | pages 554–559

Communication Verbal and Nonverbal Students Migrant at Bengkulu University

Susetyo , L A Wulung

[DOWNLOAD FULLTEXT](#)

[The 1st International Seminar on Language, Literature and Education \(ISLLE 2017\)](#) | pages 560–567

Traditions and Intellectual Discourse of the Minangkabau Community in Kaba Si Ali Amat

Y Wulandari

[DOWNLOAD FULLTEXT](#)

[The 1st International Seminar on Language, Literature and Education \(ISLLE 2017\)](#) | pages 568–575

Phatic Language in a Specific Culture Perspective in the Context of Internationalization of the Indonesian Language

R K Rahardi

[DOWNLOAD FULLTEXT](#)

[The 1st International Seminar on Language, Literature and Education \(ISLLE 2017\)](#) | pages 576–587

Women position in marriage: Finding gender relations in novel Indonesia Period of Balai Pustaka, period of 66, and period of the 70s

D Suhendi

[DOWNLOAD FULLTEXT](#)

[The 1st International Seminar on Language, Literature and Education \(ISLLE 2017\)](#) | pages 588–594

Representation of Woman Image in Anthology of Poetry “Poetry of Rahim” By the Woman Poet of Five Countries

M Ika, P Aditya

[DOWNLOAD FULLTEXT](#)

[The 1st International Seminar on Language, Literature and Education \(ISLLE 2017\)](#) | pages 595–602

The Oral Tradition of Petik Laut Banyuwangi Revitalization of Tradition and Local-Global Political Space

N Anoegrajekti, S Macaryus, M S Kusumah, L Izzah, S G Attas

[DOWNLOAD FULLTEXT](#)

[The 1st International Seminar on Language, Literature and Education \(ISLLE 2017\)](#) | pages 603–612

Representation of Locality in Osing Literature in the Novel Agul-agul Blambangan: A Description of Patriotism in Osing Society

M Sunarti, Asrumi

[DOWNLOAD FULLTEXT](#)

[The 1st International Seminar on Language, Literature and Education \(ISLLE 2017\)](#) | pages 613–618

Critical Discourse Analysis of Teachers’ Language in Learning Interaction

E A Handayani

[DOWNLOAD FULLTEXT](#)

[The 1st International Seminar on Language, Literature and Education \(ISLLE 2017\)](#) | pages 619–631

Intertextual Folklore in Animated Comics As a Learning Model of Appreciative Reading

T Setiartin

[DOWNLOAD FULLTEXT](#)

[The 1st International Seminar on Language, Literature and Education \(ISLLE 2017\)](#) | pages 632–638

Improving Students' Ability to Write Poems Through Scientific Discovery-Based Learning with Nature Pictures from Media

E Rahayu, M Rohmadi, Andayani

[DOWNLOAD FULLTEXT](#)

[The 1st International Seminar on Language, Literature and Education \(ISLLE 2017\)](#) | pages 639–646

Misleading Reasoning in Teachers' Speech in the Learning Context

R W Eriyanti

[DOWNLOAD FULLTEXT](#)

[The 1st International Seminar on Language, Literature and Education \(ISLLE 2017\)](#) | pages 647–656

Strategy of Speech and Implementation of Principle of Decency on Social Media As a Medium to Maintain Diversity of Multicultural Society in the Republic of Indonesia

M Rohmadi

[DOWNLOAD FULLTEXT](#)

[The 1st International Seminar on Language, Literature and Education \(ISLLE 2017\)](#) | pages 657–662

The Life Struggle of Female Characters in the Novels of Abidah El Khalieqy (A Feminism Study)

Y Puspita

[DOWNLOAD FULLTEXT](#)

[The 1st International Seminar on Language, Literature and Education \(ISLLE 2017\)](#) | pages 663–686

[The Language Characteristic and Its Acculturation from Chinese Speakers in Losari, Cirebon Regency, West Java: The Acculturation of Chinese with Javanese Culture](#)

N Darheni

[DOWNLOAD FULLTEXT](#)

[The 1st International Seminar on Language, Literature and Education \(ISLLE 2017\)](#) | pages 687–701

[Development of Local Art-based Drama Textbooks](#)

D R Soleh, H J Waluyo, S Y Sudikan, N E Wardani

[DOWNLOAD FULLTEXT](#)

[The 1st International Seminar on Language, Literature and Education \(ISLLE 2017\)](#) | pages 702–711

[Understanding the Core Ideas of Hermeneutics Figures](#)

T Prakoso, V Khasanah

[DOWNLOAD FULLTEXT](#)

[The 1st International Seminar on Language, Literature and Education \(ISLLE 2017\)](#) | pages 712–719

[Humanism Ethics in the Littoral Folklore as a Strengthening Strategy of Character Value Based on Local Wisdom](#)

U'um Qomariyah

[DOWNLOAD FULLTEXT](#)

[The 1st International Seminar on Language, Literature and Education \(ISLLE 2017\)](#) | pages 720–727

[Significance of Literary Ecranization in the Development of the Nation's Character](#)

A I Al-Ma'ruf, F Nugrahani

[DOWNLOAD FULLTEXT](#)

[The 1st International Seminar on Language, Literature and Education \(ISLLE 2017\)](#) | pages 728–733

Gender Inequalities and Language Expression in Education

I Nuraida, M Nasir

[DOWNLOAD FULLTEXT](#)

[The 1st International Seminar on Language, Literature and Education \(ISLLE 2017\)](#) | pages 734–743

A Study of Comprehensibility of Javanese as Used by Master of Ceremony (Pranatacara)

Sukarno

[DOWNLOAD FULLTEXT](#)

[The 1st International Seminar on Language, Literature and Education \(ISLLE 2017\)](#) | pages 744–753

Attitude of Nonlanguage Program Students Toward the Indonesian Language at the Universitas Mulawarman

W G Mulawarman, L Yankynandasari

[DOWNLOAD FULLTEXT](#)

[The 1st International Seminar on Language, Literature and Education \(ISLLE 2017\)](#) | pages 754–763

Educational Character Values in Seloko Custom Utterances of Jambi Malay Society

A Rahima

[DOWNLOAD FULLTEXT](#)

[The 1st International Seminar on Language, Literature and Education \(ISLLE 2017\)](#) | pages 764–772

Teaching and Learning of Indonesian by Constructivism Model with Inquiry Approach

I B Putrayasa

[DOWNLOAD FULLTEXT](#)

[The 1st International Seminar on Language, Literature and Education \(ISLLE 2017\)](#) | pages 773–781

Improving the Quality of Storytelling through a Language Experience Approach

T S Uswati

[DOWNLOAD FULLTEXT](#)

[The 1st International Seminar on Language, Literature and Education \(ISLLE 2017\)](#) | pages 782–789

The Relevance of Women’s Social Issues Compared with Social Reality in Indonesia in the Short Story “Morgot” By Triyanto Triwikromo

E Chamalah, A Nuryatin, S A Sayuti, I Zulaeha

[DOWNLOAD FULLTEXT](#)

[The 1st International Seminar on Language, Literature and Education \(ISLLE 2017\)](#) | pages 790–797

Ineffectiveness of Sentences in Bilingual Books in Children’s Literature

Tressyalina

[DOWNLOAD FULLTEXT](#)

[The 1st International Seminar on Language, Literature and Education \(ISLLE 2017\)](#) | pages 798–806

Politeness Principles and Strategies in Language Used By President Joko Widodo to Indonesian Citizens, Through Vlog #JOKOWIMENJAWAB

R Susanti, Sumarlam , Djatmika , M Rohmadi

[DOWNLOAD FULLTEXT](#)

Conference Paper

News of Islamic Blasphemy on the Websites of Kompas and Republika: A Critical Discourse Analysis

Nuryadi, D. Suganda, N. Sunarni, and N. Darmayanti

Literature Department, Faculty of Humanities, Padjadjaran University, Jalan Raya Bandung Sumedang KM. 21, Sumedang 45363, West Java, Indonesia

Abstract

This article presents the views of Kompas and Republika regarding the news of religious blasphemy committed by Basuki Tjahaja Purnama (BTP), the governor of Jakarta from 2014 to 2017. Kompas is considered to be close to Christians while Republika is considered to be close to Muslims. The objective of the study is to understand the views of Kompas and Republika in delivering news of Islamic religious blasphemy through the use of language. The research method used in this study is a descriptive qualitative method using Van Dijk's CDA approach, which consists of text analysis, social cognition analysis, and social context analysis. The data analyzed are samples of religious blasphemy news obtained from the website of Kompas and Republika between September 2016 and April 2017, each media is taken randomly 15% of total news. The results of the analysis show that the website of Kompas has a tendency to say that BTP did not insult religion and the court process was not fair while the website of Republika has a tendency to say that BTP was blasphemous. Both media expressed their views by creating the meaning which refers to the view of each newspaper using macrostructure elements that involve news titles, topic development, and news structure development, and microstructure elements that involve the usage of syntactic, semantic, and rhetorical aspects.

Keywords: critical discourse analysis, Jakarta gubernatorial election, macrostructure, microstructure, religious blasphemy, van Dijk's theory of CDA

Corresponding Author:

Nuryadi
 nuryadilinguistics.45bgr@gmail.com

Received: 6 April 2018

Accepted: 3 May 2018

Published: 26 July 2018

Publishing services provided by
 Knowledge E

© Nuryadi et al. This article is distributed under the terms of the [Creative Commons](#)

[Attribution License](#), which permits unrestricted use and redistribution provided that the original author and source are credited.

Selection and Peer-review under the responsibility of the ISLLE 2017 Conference Committee.

1. Introduction

In describing an event, the media does not simply relate the incident, it also incorporates its views into the news. Media is not a value-free channel, it is also the subject that constructs reality, complete with views, biases, and partiality. News does not always reflect reality. This means the media tries to influence the reader in the way they see an event. Readers are invited to see an event from the media's perspective.

 OPEN ACCESS